

Takin on the World 4/4

Intro: F#m

Verse:

| F#m | Bm | C#m | D E | F#m | Bm | C#m | F#m |

'Pre-Chorus':

| Bm | C#m | Bm | C#sus C#7 |

Chorus (major)

| F# | Bm | A G | F# |

| F# | Bm | A G | F# |

| Bm C#m | F# | Bm C#m | F# |

Verse2:

| F#m | Bm | C#m | D E | F#m | Bm | C#m | F#m |

'Pre-Chorus':

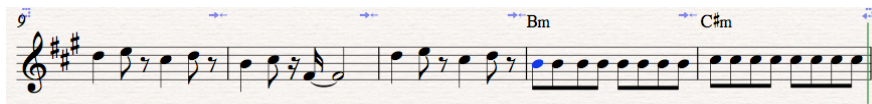
| Bm | C#m | Bm | C#sus C#7 |

(major)

| F# | Bm | A G | F# |

| F# | Bm | A G | F# |

| Bm C#m | F# | Bm C#m | -> to lick



Lick: D E C# D B C# F# | D E C# D Bm . . . C#m . .

Break (solo vocal for 2 meas of chorus),

| A G | F# |

| F# | Bm | A G | F# |

Bm C#m | F# | Bm C#m | F# |

Guitar solo over another chorus:

| F# | Bm | A G | F# |

| F# | Bm | A G | F# |

Vocal ending:

| Bm C#m | F# | Bm C#m | Bm C#m | Bm (hold) |

F#